

PRODUCT CATALOG



INTERNATIONAL  PAPER

Foodservice
Business

ABOUT INTERNATIONAL PAPER FOODSERVICE BUSINESS

International Paper Foodservice Business is the partner you need to help you grow both today and tomorrow. We are committed to understanding your business and the trends that drive the overall foodservice market. With a wide range of disposable packaging products and services, we can provide traditional and innovative high-quality packaging solutions that will be a continuing source of satisfaction to your customers.

Understanding the particular needs of your business is at the core of everything we do. We provide a variety of the highest quality disposables necessary to service your establishment's take out needs. Our packaging will help you advertise and enhance your brand.

With a dedicated staff of designers, our Graphics organization utilizes a collaborative approach to solving your graphic needs. Packaging solutions can also be designed to meet your business challenges by partnering with our innovative product development and technology teams.

Our world-class manufacturing sites and strategically located warehouses ensure reliable domestic and international distribution. At International Paper Foodservice Business, we take pride in providing superior service – delivering your orders on time, in full and without errors.

As part of International Paper, the world's largest paper and forest products company, we offer the assurance of over 100 years of experience backed by a dedicated team of professionals available to service all your needs. As your partner, your success is our success – today and tomorrow. We look forward to helping you grow.

For more information, visit www.ipfoodservice.com or call toll-free at 1-800-537-4141.

CATALOG CONTENTS

HOT BEVERAGE CONTAINERS



HOT CUPS and LIDS	5
KX2™ INSULATED HOT CUPS and LIDS	6
ecotainer™ HOT CUPS	6
VENDING HOT CUPS and LIDS	7
CUP BUDDY™	7
CUP CARRIERS	7

COLD BEVERAGE CONTAINERS



PAPER COLD CUPS and LIDS	11
PLASTIC CAR CUPS and LIDS	12
CLEAR PLASTIC COLD CUPS and LIDS	12-13
PAPER VENDING COLD CUPS and LIDS	13
CUP CARRIERS	13

FOOD PACKAGING



FOOD CONTAINERS and LIDS	18
FOOD BUCKETS and LIDS	19
POPCORN CONTAINERS and BAGS	19
FRENCH FRY / SNACK CONTAINERS	20
PLATES	20
WEB CORNER CARTONS	20
FORMED CARTONS	21
PORTION CUPS and LIDS	21

SUPPORTING INFORMATION



PRODUCT NOMENCLATURE	22
STOCK DESIGNS	23
GLOBAL PRESENCE	24



ecotainer™
Contains NatureWorks® PLA

HOT CUPS AND LIDS

Whether you have a corner coffee shop or a large chain of stores, our paper hot cups, lids, sleeves and carriers are designed to meet your needs.

The ecotainer™ hot cup is part of a revolutionary new line of foodservice packaging that provides a more environmentally sensitive alternative to traditional disposables. Sourced from fully renewable resources, these cups use a corn-based plastic as a moisture barrier rather than a petro-chemical plastic. This new PLA-based coating also makes the cup compostable in municipal and commercial composting facilities. Combined with a smaller manufacturing energy requirement, the ecotainer™ hot cup reduces our environmental impact while providing all the functionality of a standard cup.

Our standard line of paper hot cups provides an attractive and sturdy vehicle for all of your hot beverages. Several styles of lids are available to keep beverages at serving temperature and minimize spills. Add a Cup Buddy™ in kraft or white and a carrier to complete your hot beverage packaging needs.



Hot Cups

SIZE COMPARISON CHART

HOT CUPS & LIDS



COMMON LIDS (3 options)



KX2 INSULATED HOT CUP & LID SYSTEM

COMMON LIDS (3 options)



VENDING HOT CUPS & LIDS

COMMON LID



CUP BUDDY



RCDK-20 Kraft Unprinted
RCDW-20 White Unprinted

RCDK-20 Kraft Printed
RCDW-20 White Printed

RCDK-20 Kraft Printed

HOT CUP WITH HANDLE



SMRH-8
8 oz.

HOT CUPS



SIZE/DESC	STOCK #	DESIGN/COLOR	CASE/SLEEVE QUANTITY	CASE WT. (LBS.)	CASE CUBE (CU. FT.)	LID
4 oz.	SMR-4	CB, SH	1000 / 50	9.1	1.33	LHRM-4
6 oz.	SMR-6	I, SH, CB	1000 / 50	18	2.45	LHRL-6
8 oz.	SMR-8	I, SH, SM, CB	1000 / 50	20.7	2.73	LHRL-8, LHRDS-8, LHRDSB-8
8 oz. (w/ handle)	SMRH-8	I, SH	1000 / 50	20.7	2.73	
10 oz.	SMR-10	I, SH, SM, CB	1000 / 50	25.3	2.92	LHRL-10, LHRDS-10, LHRDSB-10
12 oz. tall	SMX-12	I	1000 / 50	27.1	3.16	LHMDS-12, LHMDSB-12
10 oz.	SMM-10	I, SH	1000 / 50	25.3	3.70	LHRL-16, LHRDS-16, LHRDSB-16, LHRLB-16
12 oz.	SMR-12	I, SH, SM, CB	1000 / 50	26.8	3.14	
16 oz.	SMR-16	I, SH, SM, CB	1000 / 50	34.7	3.99	
20 oz.	SMR-20	I, SH, SM, CB	500 / 25	19.9	2.83	
24 oz.	SMT-24	SH, CB	500 / 25	22.7	2.87	

COMMON LIDS

COMMON LIDS

HOT CUP LIDS



STOCK #	DESIGN/COLOR	CASE/SLEEVE QUANTITY	CASE WT. (LBS.)	CASE CUBE (CU. FT.)
LHRM-4	FLAT / WHITE	1000 / 100	3.6	1.73
LHRL-6	LOCK-BACK / WHITE	1000 / 100	5.5	1.25
LHRL-8	LOCK-BACK / WHITE	1000 / 100	5.8	1.35
LHRDS-8	DOME / WHITE	1000 / 100	7.7	1.33
LHRDSB-8	DOME / BLACK	1000 / 100	7.7	1.33
LHRL-10	LOCK-BACK / WHITE	1000 / 50	5.7	1.48
LHRDS-10	DOME / WHITE	1200 / 100	8.2	1.38
LHRDSB-10	DOME / BLACK	1200 / 100	8.2	1.38
LHMDS-12	DOME / WHITE	1200 / 100	10.4	1.36
LHMDSB-12	DOME / BLACK	1200 / 100	10.4	1.36
LHRL-16	LOCK-BACK / WHITE	1000 / 100	7	1.81
LHRDS-16	DOME / WHITE	1200 / 100	11	1.83
LHRDSB-16	DOME / BLACK	1200 / 100	11	1.83
LHRLB-16	LOCK-BACK / BLACK	1000 / 100	10.4	1.36

Hot Cups

KX2™ INSULATED HOT CUPS



SIZE/DESC	STOCK #	DESIGN/COLOR	CASE/SLEEVE QUANTITY	CASE WT. (LBS.)	CASE CUBE (CU. FT.)	LID
12 oz.	IMR-12	SA, SH, M	1000/50	31	4.1	LHIDS-16, LHIDSB-16, LHIL-16
16 oz.	IMR-16	SA, SH, M	700/35	31.5	3.9	
20 oz.	IMR-20	SA, SH, M	500/25	23	3.5	

COMMON LIDS

KX2™ INSULATED HOT CUP LIDS



STOCK #	DESIGN/COLOR	CASE/SLEEVE QUANTITY	CASE WT. (LBS.)	CASE CUBE (CU. FT.)
LHIDS-16	DOME/WHITE	1000 / 100	11	2.1
LHIDSB-16	DOME/BLACK	1000/100	11	2.1
LHIL-16	LOCK-BACK/WHITE	1000/100	8.6	1.7

ECOTAINER™ HOT CUPS



SIZE/DESC	STOCK #	DESIGN/COLOR	CASE/SLEEVE QUANTITY	CASE WT. (LBS.)	CASE CUBE (CU. FT.)	LID
4 oz.	SMRE-4	E, ECB	1000/50	9.1	1.33	LHRM-4
8 oz.	SMRE-8	E, ECB	1000/50	20.7	2.73	LHRL-8, LHRDS-8, LHRDSB-8
10 oz.	SMME-10	E, ECB	1000/50	25.4	4	LHRL-16, LHRDS-16, LHRDSB-16, LHRLB-16
12 oz.	SMRE-12	E, ECB	1000/50	26.8	3.14	
16 oz.	SMRE-16	E, ECB	1000/50	34.7	3.99	
20 oz.	SMRE-20	E, ECB	500/25	19.9	2.83	

COMMON LIDS

VENDING HOT CUPS



SIZE/DESC	STOCK #	DESIGN/COLOR	CASE/SLEEVE QUANTITY	CASE WT. (LBS.)	CASE CUBE (CU. FT.)	LID
8 oz.	SVR-8	I, SH, W	1000 / 100	30.2	3.03	LHSL-8
10 oz.	SVR-10	I, W	2000 / 80	31	3.57	LHSL-9
12 oz.	SVR-12	I, W	1500 / 75	31.7	3.29	
12 oz. squat	SVS-12	I, W	1500 / 75	31	2.96	LHSL-12

COMMON LIDS

VENDING HOT CUP LIDS



STOCK #	DESIGN/COLOR	CASE/SLEEVE QUANTITY	CASE WT. (LBS.)	CASE CUBE (CU. FT.)
LHSL-8	LOCK-BACK / WHITE	2000 / 100	8.3	1.81
LHSL-9	LOCK-BACK / WHITE	2000 / 100	10.7	2.06
LHSL-12	LOCK-BACK / WHITE	1500 / 100	7.3	1.68

CUP BUDDY™



STOCK #	DESIGN/COLOR	CASE/SLEEVE QUANTITY	CASE WT. (LBS.)	CASE CUBE (CU. FT.)
RCDW-20 *	CB, SH	1200 / 100	24	1.34
RCDK-20 *†	KRAFT, SH, E	1200 / 100	24	1.34

* Does not fit 4oz and 8oz cups

† 100% recycled / 60% from post consumer

CUP CARRIERS



STOCK #	DESIGN/COLOR	CASE/SLEEVE QUANTITY	CASE WT. (LBS.)	CASE CUBE (CU. FT.)
FCD-191025 (2 cell - cup)	KRAFT	250	23	1.73
FCD-181822 (4 cell - cup)	KRAFT	200	23.5	1.73



COLD CUPS AND LIDS

Paper or plastic? We offer both types of cold cups to meet your business needs.

Paper cups come in a wide selection of sizes and shapes – from 5 oz. to 44 oz. and in regular, squat and tall shapes. A variety of lids – flat, slotted and domed – are available to complement your choice of cup. Common lid sets minimize the number of SKUs you need and paper cups can be stacked closer together than foam, reducing your storage space.

Our plastic cups are versatile and ideal for not only cold beverages but also desserts, snacks and frozen drinks. Clear cups allow your beverage or food to merchandise itself while our plastic car cups provide on-the-go convenience.



Cold Cups

SIZE COMPARISON CHART

COLD CUPS & LIDS



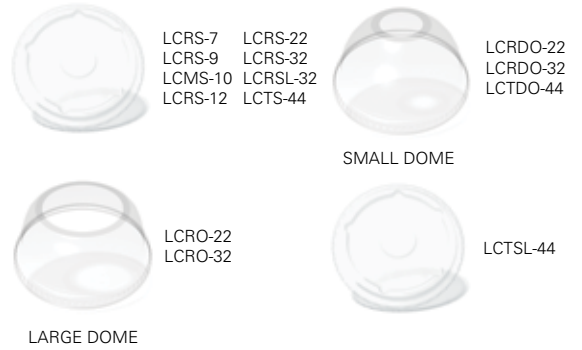
COMMON LIDS (3 options)



COMMON LIDS (4 options)



COMMON LIDS (3 options)



CAR CUPS & LIDS



CLEAR PLASTIC CUPS & LIDS

COMMON LIDS (2 options)

COMMON LIDS (2 options)



PAPER COLD CUPS



SIZE/DESC	STOCK #	DESIGN/COLOR	CASE/SLEEVE QUANTITY	CASE WT. (LBS.)	CASE CUBE (CU. FT.)	LID
5 oz.	DMR-5	I	2500 / 100	23.5	2.37	No lid available
7 oz.	DMR-7	I	2500 / 100	31.1	2.90	LCRS-7
9 oz.	DMR-9	I	2500 / 100	34.8	3.39	LCRS-9
10 oz.	DMM-10	I	2000 / 80	36.8	3.63	LCMS-10
12 oz.	DMR-12	I	2500 / 100	47	3.83	LCRS-12
12 oz. squat	DMS-12	I, C, P, ST	2000 / 100	36.7	3.89	LCRS-22, LCRO-22, LCRDO-22
16 oz.	DMR-16	I, C, P, ST	1000 / 50	26.4	2.71	
16 oz.	DMT-16	I, P	1000 / 50	28.1	3.32	
18 oz.	DMR-18	C	1000 / 50	28.1	3.32	
20 oz. tall	DMT-20	I, C, P	1000 / 50	31.2	3.66	
22 oz.	DMR-22	I, C, P, ST, PC	1000 / 50	32.7	3.77	
24 oz.	DMT-24	I, C, P, PC	1000 / 40	32	4.92	
30 oz.	DMR-30	SEE YOUR IP SALES REPRESENTATIVE	750 / 50	45.5	3.46	LCRS-32, LCRO-32, LCRSL-32, LCRDO-32
32 oz.	DMR-32	I, C, P, ST	500 / 25	27.5	3.7	
42 oz.	DMR-42	SEE YOUR IP SALES REPRESENTATIVE	600 / 40	34.5	5.52	LCTS-44, LCTSL-44, LCTDO-44
44 oz. tall	DMT-44	I, C, P, ST	500 / 25	33.7	5.05	

COMMON LIDS

COMMON LIDS

COMMON LIDS

PAPER COLD CUP LIDS



STOCK #	DESIGN/COLOR	CASE/SLEEVE QUANTITY	CASE WT. (LBS.)	CASE CUBE (CU. FT.)
LCRS-7	FLAT / TRANSLUCENT	2500 / 100	8.6	2.22
LCRS-9	FLAT / TRANSLUCENT	2500 / 100	9.55	2.44
LCMS-10	FLAT / TRANSLUCENT	2500 / 100	10.8	2.91
LCRS-12	FLAT / TRANSLUCENT	2500 / 100	11.15	3.14
LCRS-22	FLAT / TRANSLUCENT	2000 / 100	9.7	3.06
LCRO-22	LARGE DOME / CLEAR	1000 / 100	6.5	1.75
LCRDO-22	SMALL DOME / CLEAR	1000 / 100	7.5	1.72
LCRS-32	FLAT / TRANSLUCENT	1000 / 100	8.6	2.23
LCRSL-32	FLAT / TRANSLUCENT	1500 / 100	13	3.61
LCRO-32	LARGE DOME / CLEAR	1000 / 100	11.5	2.51
LCRDO-32	SMALL DOME / CLEAR	1000 / 50	14.4	2.33
LCTS-44	FLAT / TRANSLUCENT	1000 / 100	9.7	2.49
LCTSL-44	FLAT / TRANSLUCENT	1500 / 100	9.7	2.49
LCTDO-44	SMALL DOME / CLEAR	500 / 50	6	1.52

PLASTIC CAR CUPS



SIZE/DESC	STOCK #	DESIGN/COLOR	CASE/SLEEVE QUANTITY	CASE WT. (LBS.)	CASE CUBE (CU. FT.)	LID
32 oz.	PTM-32	SEE YOUR IP SALES REPRESENTATIVE	500 / 25	33.6	6.49	LCRS-32, LCRDO-32
44 oz.	PTM-44	SEE YOUR IP SALES REPRESENTATIVE	400 / 20	40.1	4.92	LCTSL-44

PLASTIC CAR CUP LIDS



STOCK #	DESIGN/COLOR	CASE/SLEEVE QUANTITY	CASE WT. (LBS.)	CASE CUBE (CU. FT.)
LCRS-32	FLAT / TRANSLUCENT	1000 / 100	8.6	2.23
LCRDO-32	SMALL DOME / CLEAR	1000 / 50	14.4	2.33
LCTSL-44	LOCK N GO	1500 / 100	14.60	3.30

CLEAR PLASTIC COLD CUPS



SIZE/DESC	STOCK #	DESIGN/COLOR	CASE/SLEEVE QUANTITY	CASE WT. (LBS.)	CASE CUBE (CU. FT.)	LID
10 oz.	PMRK-10	CL	1000 / 50	24	2.12	LPRSA-10
12 oz.	PMRK-12	CL, PAR	1000 / 50	31	3.09	LPRSA-20, LPRDO-20
20 oz.	PMRK-20	CL, PAR	1000 / 50	45	3.92	
16 oz.	PMRK-16	CL, PAR	1000 / 50	38	3.98	LPRSA-24, LPRDO-24
24 oz.	PMRK-24	CL, PAR	600 / 50	26	2.66	
32 oz.	PMRK-32	CL	300 / 25	20	2.52	LPRSA-32, LPRDO-32

COMMON LIDS

CLEAR PLASTIC COLD CUP LIDS



STOCK #	DESIGN/COLOR	CASE/SLEEVE QUANTITY	CASE WT. (LBS.)	CASE CUBE (CU. FT.)
LPRSA-10	FLAT / CLEAR	1000 / 100	10.8	2.91
LPRSA-20	FLAT / CLEAR	1000 / 100	7	1.80
LPRDO-20	DOMES / CLEAR	1000 / 100	9.2	1.97
LPRSA-24	FLAT / CLEAR	1000 / 100	8	1.92
LPRDO-24	DOMES / CLEAR	1000 / 100	10.6	2.36
LPRSA-32	FLAT / CLEAR	500 / 100	5	1.85
LPRDO-32	DOMES / CLEAR	500 / 50	6	1.32

PAPER VENDING COLD CUPS



SIZE/DESC	STOCK #	DESIGN/COLOR	CASE/SLEEVE QUANTITY	CASE WT. (LBS.)	CASE CUBE (CU. FT.)	LID
12 oz.	DVR-12	I, C, P	1500 / 75	30.9	2.93	LHSL-9
18 oz.	DVR-18	I, C, P	1200 / 50	30	3.63	LCRV-18

VENDING COLD CUP LIDS



STOCK #	DESIGN/COLOR	CASE/SLEEVE QUANTITY	CASE WT. (LBS.)	CASE CUBE (CU. FT.)
LHSL-9	LOCK-BACK / WHITE	2000 / 100	10.7	2.06
LCRV-18	FLAT / TRANSLUCENT	1000 / 100	6	1.72

CUP CARRIERS



STOCK #	DESIGN/COLOR	CASE/SLEEVE QUANTITY	CASE WT. (LBS.)	CASE CUBE (CU. FT.)
FCD-191025 (2 cell - cup)	KRAFT	250	23	1.73
FCD-181822 (4 cell - cup)	KRAFT	200	23.5	1.73



FOOD PACKAGING AND LIDS

Need an easy and attractive way to serve your food? Our containers offer strength and performance with high-quality graphics that complement the ambiance of your operation. Our versatile product line can be used for both hot and cold foods and are available in a wide variety of sizes and shapes with an assortment of lids.

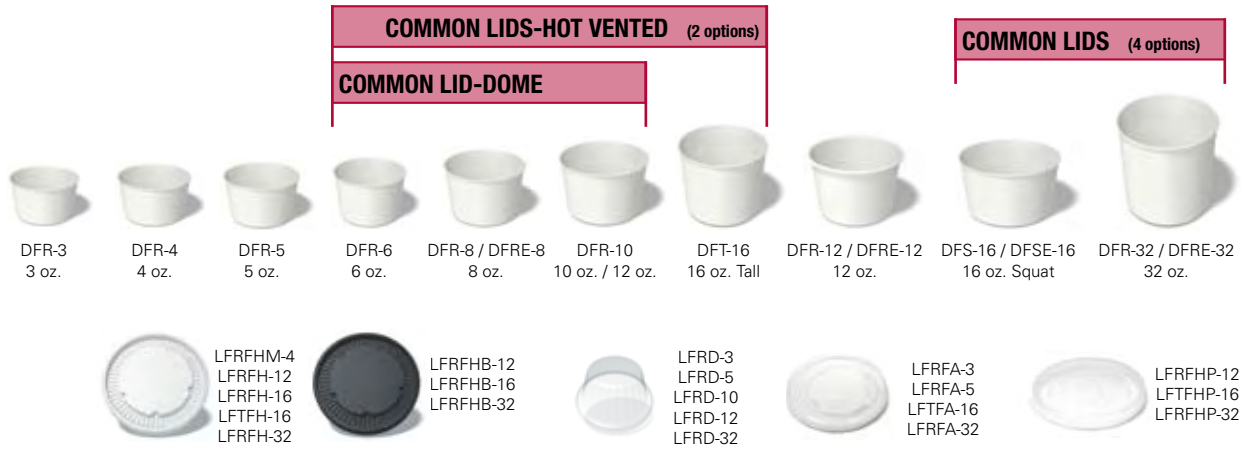
Popcorn containers deliver customer satisfaction and offer a brilliant color printing surface for graphics. For family-size meals, our three sizes of buckets with their rigid structure and lid options are ideal for any need.

All our paper food containers are stackable for easy packing and lessens storage requirements compared to alternatives like foam. Our common lid system also reduces SKU's and saves you space. From the 3 oz. container to the 170 oz. bucket, we will meet all your foodservice needs.



SIZE COMPARISON CHART

FOOD CONTAINERS & LIDS



FOOD BUCKETS, DIVIDERS & LIDS



POPCORN CONTAINERS & BAGS



SIZE COMPARISON CHART

FRENCH FRY PACKAGING



DMR-14
14 oz.

DFP-16
16 oz.

SFR-32
32 oz.

MEDIUM-WEIGHT PLATES



PML-7
7 inch Plate

PML-9
9 inch Plate

HEAVY-WEIGHT PLATES



PHL-6
6 inch Plate

PHL-7
7 inch Plate

PHL-9
9 inch Plate

PHL-10
10 inch Plate

FORMED CARTONS



RT-16
16 oz. Tray (1 lb.)

RT-48
48 oz. Tray (3 lb.)

RT-80
80 oz. Tray (5 lb.)

WEB CORNER CARTONS



RW-545250
Small
(4.25 x 4.5 x 2.5)

RW-663500
Medium
(8.375 x 6.25 x 1.875)

RW-856251
Large
(8.625 x 6.5 x 2.5)

RW-865350
Hefty
(8.625 x 6.5 x 3.5)

RW-856252
Extra Large
(9.75 x 7.75 x 3.5)

PORTION CUPS

COMMON LID



PPR-100
1 oz.

PPR-200
2 oz.

PPR-325
3.25 oz.

PPR-400
4 oz.



LPP-1
LPP-2
LPP-4/5

Food Packaging

FOOD CONTAINERS



SIZE/DESC	STOCK #	DESIGN/COLOR	CASE/SLEEVE QUANTITY	CASE WT. (LBS.)	CASE CUBE (CU. FT.)	LID
3 oz.	DFR-3	I	1000/50	11	2.15	LFRD-3, LFRA-3
4 oz.	DFR-4	I, SH	1000/50	16.3	3.1	LFRFHM-4
5 oz.	DFR-5	I	1000/50	13	1.95	LFRD-5, LFRA-5
6 oz.	DFR-6	I	1000/50	21.2	4.01	LFRD-10, LFTFH-16, LFTFHB-16, LFTFA-16, LFTFHP-16
8 oz.	DFR-8	I, SH	1000/50	18.7	2.85	
10 oz.	DFR-10	I	1000/50	24.2	3.47	
16 oz. tall	DFT-16	I, SH	500/25	17.3	2.57	
12 oz.	DFR-12	I, SH	1000/50	28.75	3.70	LFRD-12, LFRFH-12, LFRFHB-12, LFRFHP-12
16 oz. squat	DFS-16	I	500/25	19.2	3.36	LFRFA-32, LFRD-32, LFRFH-32, LFRFHB-32, LFRFHP-32
32 oz.	DFR-32	I	500/25	26.4	4.03	

COMMON LIDS

COMMON LIDS

FOOD CONTAINERS COMBO PACKS*



SIZE/DESC	STOCK #	DESIGN/COLOR	CASE/SLEEVE QUANTITY	CASE WT. (LBS.)	CASE CUBE (CU. FT.)	LID
8 oz.	DFRC-8	I, CB	250/50	7.85	1.40	LFTFH-16, LFTFHB-16
16 oz. tall	DFTC-16	I, CB	250/50	11.9	2.11	
12 oz.	DFRC-12	I, CB	250/50	11.25	1.81	LFRF-12, LFRFHB-12
16 oz. squat	DFSC-16	I, CB	250/50	14.2	3.32	LFRFH-32, LFRFHB-32, LFRFHP-32
32 oz.	DFRC-32	I, CB	250/50	16.8	3.19	

COMMON LIDS

COMMON LIDS

* Note I design is with a white lid, CB design is with a black lid. Please check with sales representative for region availability

ECOTAIR™ FOOD CONTAINERS



SIZE/DESC	STOCK #	DESIGN/COLOR	CASE/SLEEVE QUANTITY	CASE WT. (LBS.)	CASE CUBE (CU. FT.)	LID
8 oz.	DFRE-8	E	1000/50	18.7	2.6	LFRD-10, LFTFH-16, LFTFHB-16, LFTFA-16, LFTFHP-16
12 oz.	DFRE-12	E	1000/50	28.75	3.70	LFRD-12, LFRFH-12, LFRFHB-12, LFRFHP-12
16 oz. squat	DFSE-16	E	500/25	19.2	3.36	LFRD-32, LFRFH-32, LFRFHB-32, LFRFA-32, LFRFHP-32
32 oz.	DFRE-32	E	500/25	26.4	4.03	

COMMON LIDS

FOOD CONTAINER LIDS



STOCK #	DESIGN/COLOR	CASE/SLEEVE QUANTITY	CASE WT. (LBS.)	CASE CUBE (CU. FT.)
LFRD-3	COLD/DOME/CLEAR	1000/100	5.5	1.21
LFRFA-3	COLD/FLAT/CLEAR	1000/50	6	1.26
LFRFHM-4	HOT/FLAT/WHITE	2000/100	10	1.65
LFRD-5	COLD/DOME/CLEAR	1000/100	7	1.61
LFRFA-5	COLD/FLAT/CLEAR	1000/100	7	1.56
LFRD-10	COLD/DOME/CLEAR	1000/100	9.3	1.85
LFRD-12	COLD/DOME/CLEAR	1000/100	13	2.71
LFRFH-12	HOT/FLAT/WHITE	1000/100	13.8	2.49
LFRFHB-12	HOT/FLAT/BLACK	1000/100	13.8	2.49
LFRFHP-12	HOT/FLAT/CLEAR	1000/50	13	2.85
LFTFA-16	COLD/FLAT/WHITE	500/50	6.1	2.04
LFTFH-16	HOT/FLAT/WHITE	500/50	6.2	1.13
LFTFHB-16	HOT/FLAT/BLACK	500/50	6.2	1.13
LFTFHP-16	HOT/FLAT/CLEAR	1000/50	10	2.27
LFRFA-32	COLD/FLAT/WHITE	500/50	8	2.98
LFRD-32	COLD/DOME/CLEAR	1000/100	6.7	1.52
LFRFH-32	HOT/FLAT/WHITE	500/50	7.6	1.38
LFRFHB-32	HOT/FLAT/BLACK	500/50	7.6	1.38
LFRFHP-32	HOT/FLAT/CLEAR	1000/50	14	3.17

FOOD BUCKETS AND DIVIDERS



SIZE/DESC	STOCK #	DESIGN/COLOR	CASE/SLEEVE QUANTITY	CASE WT. (LBS.)	CASE CUBE (CU. FT.)	LID
45 oz.	DFS-45	I, CB	450 / 75	28.1	5.3	LFMD-85, LFRHM-85 LFRFH-85, LFRFHK-85
54 oz.	DFS-54	I, CB	450 / 75	30.2	5.5	
85 oz.	DFM-85	I	200	20.3	2.69	
130 oz.	DMM-130	I	200	29.8	5.04	LFRHM-130, LFMD-130
170 oz.	DFM-170	I	100	21.5	3.81	LFRHM-170
Bucket Divider - 85 oz.	FM-850201	CB	200	5.75	.024	N/A
Bucket Divider - 130 oz.	FM-130201	CB	200	5.75	.024	N/A

COMMON LIDS

FOOD BUCKET LIDS



STOCK #	DESIGN/COLOR	CASE/SLEEVE QUANTITY	CASE WT. (LBS.)	CASE CUBE (CU. FT.)
LFRHM-85	FLAT / WHITE	200/200	8.4	.32
LFMD-85	DOME / CLEAR	450/75	13.2	4.8
LFRFHK-85 *	FLAT / CLEAR	450/75	12.5	4.8
LFRFH-85 *	FLAT / WHITE	450/75	14.0	4.8
LFRHM-130	FLAT / WHITE	200	11.92	.54
LFMD-130	DOME / CLEAR	100 / 50	4.7	1.7
LFRHM-170	FLAT / WHITE	200	13.4	.58

* See your IP sales representative

POPCORN CONTAINERS / BAGS



SIZE/DESC	STOCK #	DESIGN/COLOR	CASE/SLEEVE QUANTITY	CASE WT. (LBS.)	CASE CUBE (CU. FT.)
24 oz.	DMT-24	PC	1000 / 40	32	4.92
32 oz.	SFR-32	PC, ST	500 / 50	18.5	3.2
46 oz.	SFR-46	PC, ST	1000 / 50	36	5.38
64 oz.	SFR-64	PC, ST	360 / 30	25	4.71
85 oz.	SFR-85	PC, ST	300 / -	21.7	3.93
130 oz.	SFR-130	PC, ST	300 / -	26	5.17
170 oz.	SFR-170	PC, ST	150 / -	20.5	5.3
46 oz. bag	BFR-46	PC, ST	1000	29	1.15
85 oz. bag	BFR-85	PC, ST	1000	37	1.64
130 oz. bag	BFR-130	PC, ST	500	28.2	1.32
170 oz. bag	BFR-170	PC, ST	250	16.65	.8

Food Packaging

FRENCH FRY / SNACK CONTAINERS



SIZE/DESC	STOCK #	DESIGN/COLOR	CASE/SLEEVE QUANTITY	CASE WT. (LBS.)	CASE CUBE (CU. FT.)	LID
12 oz. squat	DMR-14	FS	1000/50	20.7	2.18	No lid available
16 oz. squat	DFF-16	FS	500/50	23.3	3.81	No lid available
32 oz.	SFR-32	FS	500/50	18.5	3.2	No lid available

MEDIUM WEIGHT PLATES



SIZE/DESC	STOCK #	DESIGN/COLOR	CASE/SLEEVE QUANTITY	CASE WT. (LBS.)	CASE CUBE (CU. FT.)
7 inch	PML-7	I	1000/125	14.5	.96
9 inch	PML-9	I, CB	1000/125	31.5	1.83

HEAVY WEIGHT PLATES



SIZE/DESC	STOCK #	DESIGN/COLOR	CASE/SLEEVE QUANTITY	CASE WT. (LBS.)	CASE CUBE (CU. FT.)
6 inch	PHL-6	I	1000/125	14.3	.83
7 inch	PHL-7	I, SH	1000/125	19.8	1.12
9 inch	PHL-9	I, SH, CB	500/125	23.4	1.34
10 inch	PHL-10	I	500/125	25.1	1.7

WEB CORNER CARTONS



SIZE/DESC	STOCK #	DESIGN/COLOR	CASE QUANTITY	CASE WT. (LBS.)	CASE CUBE (CU. FT.)
Small (4.25 x 4.5 x 2.5)	RW-545250	CB	450	40	3.9
Medium (8.375 x 6.25 x 1.875)	RW-663500	CB	200	36	3.6
Large (8.625 x 6.5 x 2.5)	RW-856251	CB	200	42	4.43
Hefty (8.625 x 6.5 x 3.5)	RW-865350	CB	160	25	2.6
Extra Large (9.75 x 7.75 x 3.5)	RW-856252	CB	160	30	5.9

FORMED CARTONS



SIZE/DESC	STOCK #	DESIGN/COLOR	CASE/SLEEVE QUANTITY	CASE WT. (LBS.)	CASE CUBE (CU. FT.)
16 oz. Tray	RT-16	I	1000 / 250	14.9	.89
48 oz. Tray	RT-48	I	500 / 250	14.7	.85
80 oz. Tray	RT-80	I	500 / 250	18.7	1.16

PORTION CUPS



SIZE/DESC	STOCK #	DESIGN/COLOR	CASE/SLEEVE QUANTITY	CASE WT. (LBS.)	CASE CUBE (CU. FT.)	LID
1 oz. cup	PPR-100	TL	5000 / 250	17	1.53	LPP-1
2 oz. cup	PPR-200	TL	2500 / 250	13	1.32	LPP-2
3 1/4 oz. cup	PPR-325	TL	2500 / 250	18	1.79	LPP-4/5
4 oz. cup	PPR-400	TL	2500 / 250	23	1.95	

COMMON LIDS

PORTION CUP LIDS



STOCK #	DESIGN/COLOR	CASE/SLEEVE QUANTITY	CASE WT. (LBS.)	CASE CUBE (CU. FT.)
LPP-1	FLAT / CLEAR	5000 / 100	8	1.46
LPP-2	FLAT / CLEAR	2500 / 100	8	1.5
LPP-4/5	FLAT / CLEAR	2500 / 100	12	2.67

Product Nomenclature

Cups / Containers

1	2	3	4	5	6	7	8
Material	Application	Shape	Features	Approx. Capacity (oz.)			
D - Double poly S - Single poly P - Plastic I - Insulated	M - Manual V - Vending F - Food T - Travel P - Portion	R - Regular T - Tall S - Squat M - Modified	C - Combo pck. H - Handle K - Clear (plastic) I - Insulated E - Ecotainer™				

Lids

1	2	3	4	5	6	7	8	9
Material	Application	Shape	Type	Descriptor	Approx. Capacity (oz.)			
L - Lid	C - Cold H - Hot F - Food P - Plastic	R - Regular T - Tall S - Squat M - Modified P - Portion I - KX2	S - Slotted V - Vending D - Dome F - Flat H - Finger hole M - Manual L - Lock-back O - Dome/Lrg. opening	S - Styrene K - Crystal O - Dome/Sm. opening H - Hot vented W - White B - Black L - Lock-on M - Modified C - Colored A - APET P - Polypropylene				

Plates

1	2	3	4	5	6	7	8
Product	Material Caliper	Coating	Type	Size (in)			
P - Plate	H - Heavy M - Medium	L - Laquered					

Folding Carton

1	2	3	4	5	6	7	8	9				
Product	Type	Descriptor	Length						Width		Height	
F - Folding carton R - Formed carton	C - Carriers L - Lock top T - Tray W - Web	D - Drink										
									First 6 digits of dimensions (cm)			

KEY

Example Stock No. — [**DFR-4**]

Character Position No. — [1 2 3 4 5]

Significance — [**Material** **Application** **Shape** **Special Features** **Capacity (oz.)**]

D-double poly F-food R-regular (none)

All case weights (pounds) and case volumes (cubic feet) are approximated and may vary.



C
Coke



CB
Carte Blanc®



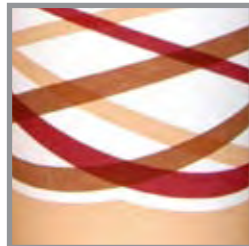
E
ecotainer™



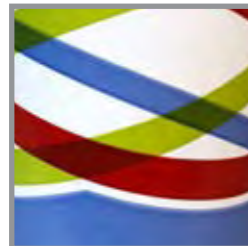
ECB
ecotainer Carte Blanc™



FS
Family Style™



I
Infinity™ Hot Cups



I
Infinity™ Cold Cups



I
Infinity™ Food Packaging



K
Kraft



M
Metro™



PAR
Paradise™



P
Pepsi



PC
Popcorn™



SA
Sand™



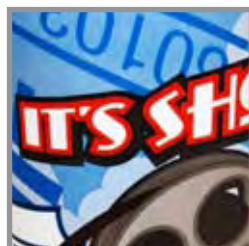
SH
SoHo®



SH
SoHo® Food Packaging



SM
SoMa®



ST
Showtime™ Drink



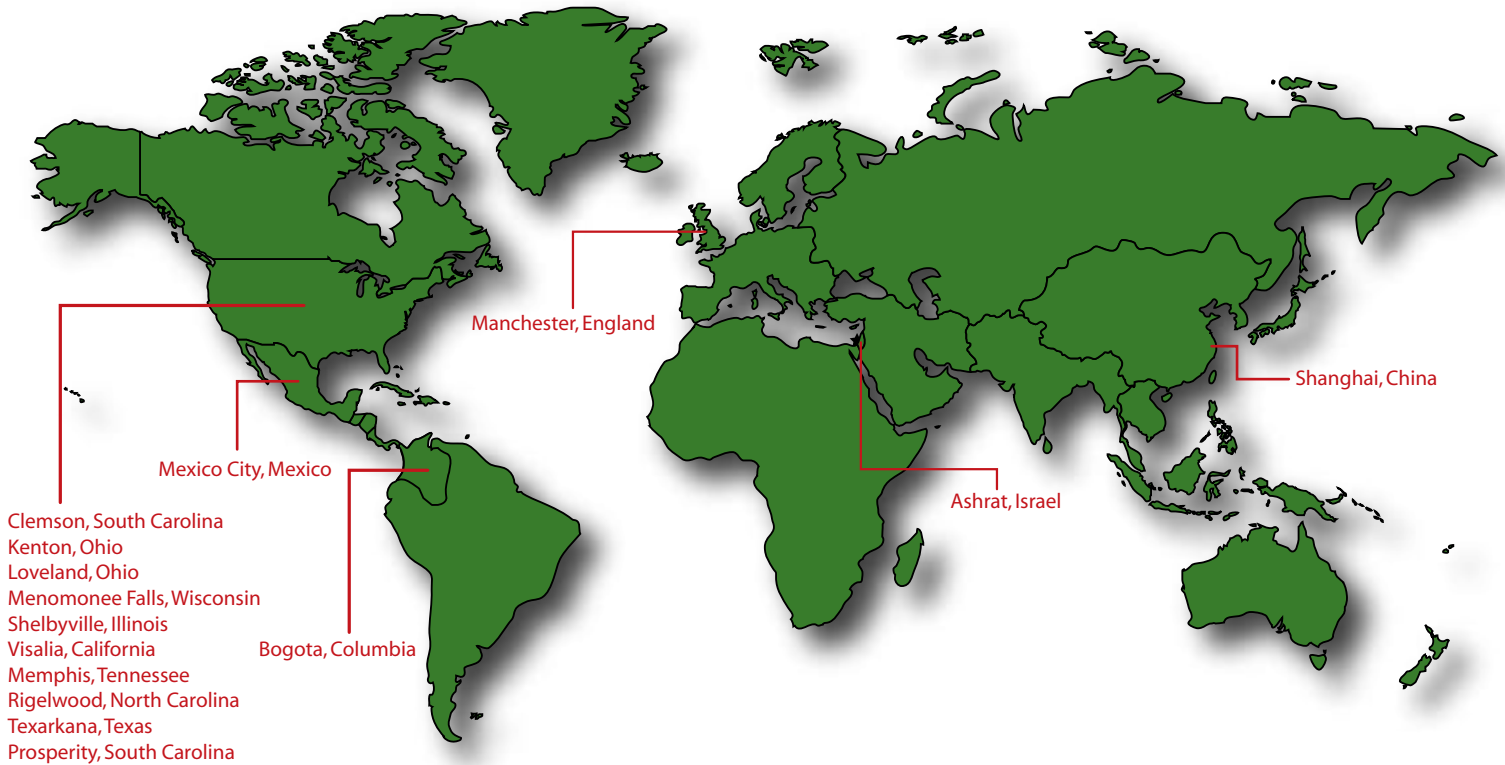
ST
Showtime™ Popcorn



W
Wildcard Vending

Our world-class manufacturing sites and strategically located warehouses ensure reliable international distribution. At International Paper Foodservice Business, we take pride in providing superior service – delivering your orders in full and without errors.

Operations Locations



Markets We Serve

- Aruba
- Australia
- Bolivia
- Canada
- China
- Columbia
- Costa Rica
- Denmark
- Ecuador
- Egypt
- El Salvador
- Finland
- France
- Germany
- Greece
- Guatemala
- Honduras
- Hong Kong
- India
- Ireland
- Israel
- Italy
- Japan
- Korea
- Mexico
- Nicaragua
- Netherlands
- New Zealand
- Panama
- Phillipines
- Portugal
- Singapore
- Spain
- Sweden
- Taiwan
- Tazmania
- Trinidad &Tobago
- United Kingdom
- United States
- Venezuela

For more information on our international operations, please contact Bill Wells at +1 901-419-4791

INTERNATIONAL  PAPER

For more product
information, go to
www.ipfoodservice.com
or call Customer Service
at 800.537.4141